



Scan QR Code
for current
pricing.

BULL GRILLS

BULL GRILLS & COMPONENTS

GAS | CHARCOAL

REV: 08/15/25

TABLE OF CONTENTS

GAS GRILLS

24" Grill..... 2

30" Grill..... 4

38" Grill..... 6

46" Grill..... 8

CHARCOAL GRILL

Bison 10

GAS GRIDDLE

Stockman Griddle 11

BUILT-IN GRILL COMPONENTS

Pizza Oven..... 12

Vent Hood..... 14

Side Burners..... 15

Door Components 16

Drawer Components..... 17

Island Components..... 18

Refrigeration 19



LITERATURE

Item #	Description	Retail
24158	Product Guide	N/C
24177	Pizza Oven Dual Fuel	N/C
15555	Grill Head & ReliaBull Flyer	N/C
24156	Bull Quad Fold Brochure	N/C

24" GAS GRILLS



BULL GRILLS



STEER
24" 3 - Burner



Steer Grill w/ Cart

GRILL FEATURES

- 304, 14 Gauge Stainless Steel Construction
- 45,000 BTU Main Cooking Surface
- 15,000 BTU's per Burner
- Single Piece Dual Lined Hood
- Solid Stainless Steel Cooking Grates
- ReliaBull SS Flame Tamers
- Full Size Drip Tray
- Heavy Duty Thermometer
- Push & Turn Piezo Igniter
- Zinc Control Knobs
- Warming Rack Included
- Available in NG or LP
- Available in Built-in and Cart Models

SPECIFICATIONS

FEATURE	24" STEER
Burner Style	SS Bar
Cooking Surface	556 sq.in.
Dash Board Lights	✗
Twin Interior Lights	✗
Infrared Back Burner	✗
Rotisserie Kit	✗
Infrared Searing Burner	Optional
Weather Cover	Optional
Warranty	Lifetime Grates & Firebox

✗=Not Available

CART FEATURES

- Stainless Steel Construction
- Cart Base comes standard with Double Doors
- Side Shelves feature towel racks and tool hooks
- 4 heavy duty swivel locking casters
- Optional Side Kick Cart Side Burner

24" GAS GRILLS



GRILL HEADS

Cut-Out Dimensions: 25 5/8" W x 9 1/2" H x 21" D

Item # - NG	Item # - LP	Description	Retail
69009	69008	24" Steer Grill Head, 3 Burner	\$1,609

CARTS (Requires Grill Head)

Item #	Description	Retail
69500	24" Steer Cart	\$739
60010	Side Kick Cart Side Burner - LP 12,000 BTU's (Compatible with all Gas Grill Carts)	\$659

WEATHER COVERS

Item #	Description	Retail
72016	24" Steer Weather Cover, Grill Head	\$99
72010	24" Steer Weather Cover, Cart and Grill	\$159

ACCESSORIES

Item #	Description	Retail
20505	Infrared Searing Burner, 20,000 BTU's (Fits all Bull Grills)	\$459
97020	Griddle Plate, Removable (Replaces 2 Grill Grates)	\$319
24267	Grease Tray Liner - 3 Pack Poly Bag	\$19
75000	Smoker Box, Large Easy Fill (Fits full length between Flame Tamers & Grates)	\$69
24402	Wind Guard, 24"	\$589
69429	Finishing Frame, 1/2" Reveal (Cut-Out Dimensions: 25 5/8" W x 9 1/2" H)	\$129



Side Kick Cart Side Burner



Grill Head Weather Cover



Griddle Plate



Grease Tray Liner



1/2" Reveal

30" GAS GRILLS



BULL GRILLS



OUTLAW & LONESTAR
30" 4 - Burner



ANGUS
30" 4 - Burner



ANGUS ELITE
30" 4 - Burner

Elite Grill Series
Available to
Elite Dealers
ONLY



CART FEATURES

- Stainless Steel Construction
- Cart Base comes standard with Double Doors
- Side Shelves feature towel racks and tool hooks
- 4 heavy duty swivel locking casters
- Optional Side Kick Cart Side Burner

FEATURES

- 304, 14 Gauge Stainless Steel Construction
- 60,000 BTU Main Cooking Surface
- 15,000 BTU's per Burner
- Single Piece Dual Lined Hood
- Solid Stainless Steel Cooking Grates
- ReliaBull SS Flame Tamers
- Full Size Drip Tray
- Heavy Duty Thermometer
- Push & Turn Piezo Igniter
- Zinc Control Knobs
- Warming Rack Included
- Available in NG or LP
- Available in Built-in and Cart Models

SPECIFICATIONS

FEATURE	30" OUTLAW	30" LONESTAR	30" ANGUS	30" ANGUS ELITE
Burner Style	Porcelain Coated Cast Iron	SS Bar	Cast SS	Cast SS
Cooking Surface	810 sq. in.	810 sq. in.	810 sq.in.	810 sq.in.
Dash Board Lights	✗	✗	✗	Red
Twin Interior Lights	✗	✓	✓	✓
Infrared Back Burner	✗	✗	15,000 BTU's	15,000 BTU's
Rotisserie Kit	Optional	Optional	Included	Included
Infrared Searing Burner	Optional	Optional	Optional	Included
Weather Cover	Optional	Optional	Optional	Built-in Included
Warranty	Lifetime Grates & Firebox		Lifetime Grates, Firebox, & Burner	

30" GAS GRILLS



GRILL HEADS

Cut-Out Dimensions: 31" W x 9 ½" H x 21" D

Item # - NG	Item # - LP	Description	Retail
26039	26038	30" Outlaw Grill Head, 4 Burner	\$1,749
87049	87048	30" Lonestar Grill Head, 4 Burner	\$2,129
47629	47628	30" Angus Grill, 4 Burner	\$2,839
42009	42008	30" Angus Elite Grill, 4 Burner	\$3,689

CARTS

(Requires Grill Head)

Item #	Description	Retail
45551	30" Cart	\$1,219
60010	Side Kick Cart Side Burner - LP 12,000 BTU's (Compatible with all Gas Grill Carts)	\$659

WEATHER COVERS

Item #	Description	Retail
45005	30" Weather Cover, Grill Head (Included with Angus Elite)	\$99
72012	30" Weather Cover, Cart and Grill	\$169

INSULATED JACKETS

(Used when installing the grill into a combustible island structure) Double Lined

Item #	Description	Cut-Out Dimensions	Retail
47017	30" Grill Insulated Jacket	37 ¾" W x 10" H x 22" D	\$649

ACCESSORIES

Item #	Description	Retail
20505	Infrared Searing Burner, 20,000 BTU's (Included with Angus Elite)	\$459
97020	Griddle Plate, Removable (Replaces 2 Grill Grates)	\$319
24268	Grill Grease Tray Liner - 12 pcs per box	\$49
46000	Rotisserie Kit (Includes SS Motor, Spit, Cage & Counter Balance) (Included with Angus & Angus Elite)	\$309
75000	Smoker Box, Large Easy Fill (Fits full length between Flame Tamers & Grates)	\$69
24403	Wind Guard, 30"	\$599
49330	Finishing Frame, ½" Reveal (Cut-Out Dimensions: 31" W x 9 ½" H)	\$129



Side Kick Cart Side Burner



Grill Head Weather Cover



Griddle Plate



Grease Tray Liner



½" Reveal

38" GAS GRILLS



BULL GRILLS



BRAHMA
38" 5 - Burner

Elite Grill Series
Available to
Elite Dealers
ONLY



BRAHMA ELITE
38" 5 - Burner



CART FEATURES

- Stainless Steel Construction
- Cart Base comes standard with Double Doors
- Side Shelves feature towel racks and tool hooks
- 4 heavy duty swivel locking casters
- Optional Side Kick Cart Side Burner

FEATURES

- 304, 14 Gauge Stainless Steel Construction
- 75,000 BTU Main Cooking Surface
- 15,000 BTU's per Burner
- Single Piece Dual Lined Hood
- Solid Stainless Steel Cooking Grates
- ReliaBull SS Flame Tamers
- Full Size Drip Tray
- Heavy Duty Thermometer
- Push & Turn Piezo Igniter
- Zinc Control Knobs
- Warming Rack Included
- Available in NG or LP
- Available in Built-in and Cart Models

SPECIFICATIONS

FEATURE	38" BRAHMA	38" BRAHMA ELITE
Burner Style	Cast SS	Cast SS
Cooking Surface	1,026 sq.in.	1,026 sq. in.
Dash Board Lights	✗	Red
Twin Interior Lights	✓	✓
Infrared Back Burner	15,000 BTU's	15,000 BTU's
Rotisserie Kit	Included	Included
Infrared Searing Burner	Optional	Included
Weather Cover	Optional	Built-in Included
Warranty	Lifetime Grates, Firebox, & Burner	

38" GAS GRILLS



GRILL HEADS

Cut-Out Dimensions: 38 ½" W x 9 ½" H x 21" D

Item # - NG	Item # - LP	Description	Retail
57569	57568	38" Brahma Grill, 5 Burner	\$3,789
52009	52008	38" Brahma Elite Grill, 5 Burner	\$4,799

CART *(Requires Grill Head)*

Item #	Description	Retail
55510	38" Cart	\$1,299
60010	Side Kick Cart Side Burner - LP 12,000 BTU's (Compatible with all Gas Grill Carts)	\$659

WEATHER COVERS

Item #	Description	Retail
56006	38" Weather Cover, Grill Head (Included with Brahma Elite)	\$109
55005B	38" Weather Cover, Cart and Grill	\$188

INSULATED JACKET *(Used when installing the grill into a combustible island structure) Double Lined*

Item #	Description	Cut-Out Dimensions	Retail
47018	38" Brahma Grill Insulated Jacket	45 ¾" W x 10" H x 22" D	\$729

ACCESSORIES

Item #	Description	Retail
20505	Infrared Searing Burner, 20,000 BTU's (Included with Brahma Elite)	\$459
97020	Griddle Plate, Removable (Replaces 2 Grill Grates)	\$319
24269	Grease Tray Liner (12 pcs per box)	\$59
75000	Smoker Box, Large Easy Fill (Fits full length between Flame Tamers & Grates)	\$69
24404	Wind Guard, 38"	\$619
58730	Finishing Frame, ½" Reveal (Cut-Out Dimensions: 38 ½" W x 9 ½" H)	\$169



Side Kick Cart Side Burner



Grill Head Weather Cover



Griddle Plate



Grease Tray Liner



½" Reveal

46" GAS GRILL



BULL GRILLS



DIABLO GRILL HEAD
46" 6 - Burner



Diablo Grill w/ Cart

CART FEATURES

- Stainless Steel Construction
- Cart Base comes standard with (2) Drawers and (2) Single Doors
- Side Shelves feature towel racks and tool hooks
- 4 heavy duty swivel locking casters
- Optional Side Kick Cart Side Burner

FEATURES

- 304, 14 Gauge Stainless Steel Construction
- 90,000 BTU Main Cooking Surface
- 15,000 BTU's per Burner
- Single Piece Dual Lined Hood
- Solid Stainless Steel Cooking Grates
- ReliaBull SS Flame Tamers
- Full Size Drip Tray
- Heavy Duty Thermometer
- Push & Turn Piezo Igniter
- Zinc Control Knobs
- Warming Rack Included
- Available in NG or LP
- Available in Built-in and Cart Models

SPECIFICATIONS

FEATURE	46" DIABLO
Burner Style	Cast SS
Cooking Surface	1,242 sq. in.
Dash Board Lights	✗
Twin Interior Lights	✓
Infrared Back Burner	15,000 BTU's
Rotisserie Kit	Included
Infrared Searing Burner	Optional
Weather Cover	Optional
Warranty	Lifetime Grates, Firebox, & Burner

46" GAS GRILL



GRILL HEADS

Cut-Out Dimensions: 46" W x 9 ½" H x 21" D

Item # - NG	Item # - LP	Description	Retail
62649	62648	46" Diablo Grill, 6 Burner	\$4,729

CART (Requires Grill Head)

Item #	Description	Retail
28038	46" Diablo Cart w/ Adapter	\$1,668
60010	Side Kick Cart Side Burner - LP 12,000 BTU's (Compatible with all Gas Grill Carts)	\$659

WEATHER COVERS

Item #	Description	Retail
72017	46" Diablo Weather Cover, Grill Head	\$119
72014	46" Diablo Weather Cover, Cart and Grill	\$189

ACCESSORIES

Item #	Description	Retail
20505	Infrared Searing Burner, 20,000 BTU's	\$459
97020	Griddle Plate, Removable (Replaces 2 Grill Grates)	\$319
75000	Smoker Box, Large Easy Fill (Fits full length between Flame Tamers & Grates)	\$69
24405	Wind Guard, 46"	\$619
72009	Finishing Frame, ½" Reveal (Cut-Out Dimensions: 46" W x 9 ½" H)	\$199



Side Kick Cart Side Burner



Grill Head Weather Cover



Griddle Plate



½" Reveal

BISON CHARCOAL GRILL



The Bison Charcoal Grill cart has been re-engineered for greater performance. The vent system and gasket features allows for greater temperature control with the ability to regulate the oxygen flow into the firebox. Now you can set up the Bull Bison for slow and low BBQ, or crank it up to get that steak house quality sear on your steaks and chops.

BULL GRILLS



GRILL HEAD

Cut-Out Dimensions: 29 1/2" W x 13 1/4" H x 18 1/2" D

Item #	Description	Retail
88787	30" Bison Charcoal Grill Head	\$1,949

ACCESSORIES

Item #	Description	Retail
88900	30" Bison Cart	\$619
72018	30" Bison Weather Cover, Grill Head	\$99
88720	Finish Frame, 1/2" Reveal (Cut-Out Dimensions: 29 1/2" W x 13 1/4" H)	\$139



FEATURES

- 304, 14 Gauge Stainless Steel Construction
- Single Piece Dual Lined Hood
- Heavy Duty Stainless Steel Grates
- Adjustable Charcoal Bed
- High Temp Oven Gasket
- Heavy Duty Thermometer
- Warming Rack 210 sq. in.
- Cooking Surface 810 sq. in.



STOCKMAN GAS GRIDDLE



Like all of Bull's products, the Bull Commercial Style Griddles are constructed of 304 stainless steel and uses multiple burners to produce powerful BTU's under a chromium plated griddle designed to withstand its intended outdoor application.



30" GRIDDLE



BULL GRILLS

GRIDDLE

Cut-Out Dimensions: 31" W x 9 1/2" H x 21" D

Item # - NG	Item # - LP	Description	Retail
92009	92008	30" Stockman Griddle Head	\$2,769

INSULATED JACKET

(Used when installing the grill into a combustible island structure) Double Lined

Item #	Description	Cut-Out Dimensions	Retail
47017	30" Insulated Jacket	37 7/8" W x 10" H x 22" D	\$649

ACCESSORIES

Item #	Description	Retail
45551	30" Cart, Griddle	\$1,219
72019	30" Weather Cover, Griddle Head	\$109
72020	30" Weather Cover, Cart and Griddle	\$109
24268	Grease Tray Liner (12 pcs per box)	\$49
24403	Wind Guard	\$599
49330	Finishing Frame, 1/2" Reveal (Cut-Out Dimensions: 31" W x 9 1/2" H)	\$129

GRIDDLE FEATURES

- 304, 14 Gauge Stainless Steel Construction
- 556 sq. in. Cooking Surface
- 60,000 BTU Main Cooking Surface
- Single Piece Dual Lined Hood
- Cast Iron Chromium Plated Griddle
- Full Size Drip Tray
- Push & Turn Piezo Igniter
- Zinc Control Knobs
- Available in NG or LP
- Lifetime Warranty on Griddle Top & Firebox

CART FEATURES

- Stainless Steel Construction
- Cart Base comes standard with Double Doors
- Side Shelves feature towel racks tool hooks
- 4 heavy duty swivel locking casters



COUNTERTOP OVEN

Dual Fuel



BULL GRILLS



Countertop Oven - Dual Fuel



Countertop Oven Cart

COUNTERTOP OVEN

Dimensions: 29" W x 30" H x 21" D

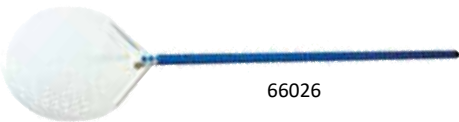
Item # - NG	Item # - LP	Description	Retail
69564	69550	Countertop Oven - Dual Fuel Includes: Cover, Pizza Peel/Launcher	\$1,779

ACCESSORIES

Item #	Description	Retail
69577	Cart, Countertop Oven	\$519
66026	Pizza Tools - Professional Perforated Peel (Handle Length 46")	\$299
69569	Peel, Small (Stainless Steel)	\$199
69570	Brush, Short Handle	\$199

FEATURES

- Dual Fuel LP, NG, or Wood
- Removable Bluetooth Digital Thermometer
- Includes Cover and Pizza Peel/Launcher
- Two Food Temperature Probes
- Convenient Ash Clean Out Basket
- Can Reach Temperatures Up to 900°F
- Versatile Temp Control for Baking and Roasting
- Heats Up in Approximately 15 Minutes
- Quick Disconnect Gas Line



Note: Oven is designed to use with Gas or Wood separately, not together. Using the gas function in conjunction with wood will void any warranties.

OVEN

Gas



BULL GRILLS

The Bull Gas Fired Oven offers the same great features of wood-fired ovens but with the added convenience of cooking with gas. These units don't require the ash cleanup that is associated with their wood-fired counterparts.

OVEN

Dimensions: 38 1/2" W x 50" H x 33 3/4" D

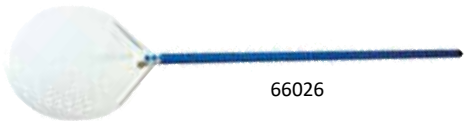
Item #	Description	Retail
77650	Oven, LP Gas	\$5,898

ACCESSORIES

Item #	Description	Retail
77651	Cart, Oven	\$1,168
77653	NG Conversion Kit, Oven	\$138
66026	Pizza Tools - Professional Perforated Peel (Handle Length 46")	\$299
69569	Peel, Small (Stainless Steel)	\$199
69570	Brush, Short Handle	\$199

FEATURES

- Proudly made in Italy with European parts for authentic quality
- Fully operational in approximately fifteen minutes of preheating
- Our unique cooking chamber, domed front-to-back and side-to-side, eliminates hot spots and ensures uniform heat distribution.
- Cart features Slide-out handles and caster wheels that allow mobility and precise placement
- Painted exterior surfaces are electro-galvanized before powder coating, providing superb protection against corrosion.
- Maximum temperature rating of 900°F / 482.2°C; the highest on the market. Food Grade Cooking Stones
- 36,000 BTUs





VENT HOOD

The vent hood has 304 Grade 16 Gauge stainless steel construction, two powerful internal fan systems, and lights.

VENT HOODS

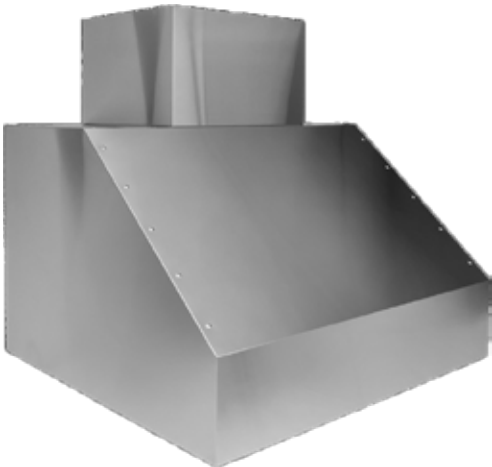
Item #	Description	Retail
66009	36" Vent Hood, Wall Mounted	\$5,099
66098	42" Vent Hood, Wall Mounted	\$4,999

VENT DUCT COVERS

Item #	Description	Retail
66110	18" Vent Duct Cover, for Ceilings 9' - 10' (18"W x 15"D)	\$918
66111B	42" Vent Duct Cover, for Ceilings 9' - 10' (42"W x 15"D) (42" Vent Hood Only)	\$989
66112	18" Vent Duct Cover, for Ceilings 10' - 12' (18"W x 15"D)	\$1,029
66113	42" Vent Duct Cover, for Ceilings 10' - 12' (42"W x 15"D) (42" Vent Hood Only)	\$1,194

FEATURES

- 304 Grade, 16 Gauge Stainless Steel Construction
- Dishwasher Safe, Commercial Grade Stainless Steel Baffle Filters
- Two Internal Exhaust Fans that Generate 1250 CFM
- Dimmable Twin 50-watt Halogen Lights
- Generously proportioned 32" hood depth provides an exceptional capture area
- 10" Round Top Discharge
- Matching Duct Covers are available for Vent Hoods



Vent Hood with Duct Cover

ELECTRICAL REQUIREMENTS

- 120 Volt Hardwire
- 20 Amp Electrical Supply

SIDE BURNERS



60008/60009

SINGLE SIDE BURNER

\$549

Cut-Out Dimensions: 11 ¼" W x 3 ¼" H x 17 ½" D

- 60008** Burner, LP (Connects to grill)
60009 Burner, NG (Independent)

Specifications:

15,000 BTU's | Drop-in Installation | SS Burner with SS Burner Cover



60018/60019

SINGLE SIDE BURNER, PRO

\$849

Cut-Out Dimensions: 12 ¾" W x 9 ½" H x 12" D

- 60018** Burner, LP (Connects to grill)
60019 Burner, NG (Independent)

- 93007** Finishing Frame, Flat **\$108**
93008 Finishing Frame, ½" Reveal **\$99**

Cut-Out Dimensions: 12 ½" W x 7 ¾" H

Cut-Out Dimensions: 12" W x 9 ½" H

Specifications:

25,000 BTU's | Slide-in Installation | Brass Burner with SS Burner Cover



30008/30009

DOUBLE SIDE BURNER

\$929

Cut-Out Dimensions: 12 ¾" W x 9 ½" H x 20 ¾" D

- 30008** Burner, LP (Connects to grill)
30009 Burner, NG (Independent)

- 93007** Finishing Frame, Flat **\$108**
93008 Finishing Frame, ½" Reveal **\$99**

Cut-Out Dimensions: 12 ½" W x 7 ¾" H

Cut-Out Dimensions: 12" W x 9 ½" H

Specifications:

22,000 BTU's | Slide-in Installation | Brass Burner with SS Burner Cover



440009

DOUBLE SIDE BURNER, ELITE

\$1,099

Cut-Out Dimensions: 12 ¾" W x 9 ½" H x 20 ¾" D

Includes: Knob Lights

- 40009** Burner, NG (Independent)

- 93007** Finishing Frame, Flat **\$108**
93008 Finishing Frame, ½" Reveal **\$99**

Cut-Out Dimensions: 12 ½" W x 7 ¾" H

Cut-Out Dimensions: 12" W x 9 ½" H

Specifications:

22,000 BTU's | Slide-in Installation | Brass Burner with SS Burner Cover



96000/96001

POWER BURNER

\$1,769

Cut-Out Dimensions: 21" W x 9 ½" H x 21" D

- 96000** Burner, LP (Connects to 20 lb tank)
96001 Burner, NG (Independent)

- 96150** Finishing Frame, Flat **\$128**
96151 Finishing Frame, ½" Reveal **\$129**

Cut-Out Dimensions: 21 ½" W x 7 ¾" H

Cut-Out Dimensions: 21" W x 9 ½" H

Specifications:

61,000 BTU's | Slide-in Installation | Brass/SS Burner with SS Burner Cover

DOOR COMPONENTS



DOUBLE DOORS

30" & 38" Includes: Paper Towel Holder

33590 25", ½" Reveal \$559

33580 30", ½" Reveal \$609

34000 38", Flat \$629

34020 38", ½" Reveal \$729

Cut-Out Dimensions:

25" - 25 ½" W x 19 ¾" H

30" - 31" W x 19 ¾" H

38" - 38 ½" W x 19 ¾" H



HORIZONTAL DOOR

89990 ½" Reveal \$419

Cut-Out Dimensions:

23 ¼" W x 15 ¾" H



VERTICAL DOOR

Includes: Paper Towel Holder

89995 Right, ½" Reveal \$479

98560 Left, ½" Reveal \$479

Cut-Out Dimensions:

15 ½" W x 19 ¾" H



DOUBLE DOORS, VENTED

45580 30", ½" Reveal \$729

Cut-Out Dimensions:

31" W x 19 ¾" H



VERTICAL DOOR, VENTED

Right Swing

90000 ½" Reveal \$399

Cut-Out Dimensions:

23" W x 15 ¾" H



Reversible

DOOR/2 DRAWER COMBO

Includes: Paper Towel Holder

25890 30", ½" Reveal \$1,019

55875 38", Flat \$999

55890 38", ½" Reveal \$1,169

Cut-Out Dimensions:

30" - 31" W x 19 ¾" H x 20 ¾" D

38" - 38 ¾" W x 19 ¾" H x 20 ¾" D



Reversible

DOOR/3 DRAWER COMBO

Included Paper Towel Holder

25900 30", ½" Reveal \$1,169

25920 38", ½" Reveal \$1,309

Cut-Out Dimensions:

30" - 31" W x 19 ¾" H x 20 ½" D

38" - 38 ¾" W x 19 ¾" H x 20 ½" D



DOOR/PROPANE DRAWER

Pull out 20 lb Propane Tank Access.

Includes Paper Towel Holder

65790 ½" Reveal \$1,019

Cut-Out Dimensions:

31 ½" W x 19 ¾" H x 16 ¾" D

Note:

Dimensions listed are Cut-Out Dimensions

DRAWER COMPONENTS



SINGLE TRASH, SLIM

Includes 10 Gallon Trash Bin

56941	Flat	\$659
56960	½" Reveal	\$779

Cut-Out Dimensions:
14 ⅝" W x 24 ⅝" H x 19 ⅞" D



TRIPLE DRAWER (21" W)

58110	Flat	\$958
58120	½" Reveal	\$1,009

Cut-Out Dimensions:
18 ½" W x 24 ⅝" H x 16 ¼" D



DOUBLE TRASH

Includes (2) 8 Gallon Trash Bins

56950	½" Reveal	\$1,139
-------	-----------	---------

Cut-Out Dimensions:
18 ½" W x 24 ⅝" H x 23 ¼" D



DOUBLE DRAWER (15" W)

56985	Flat	\$659
56990	½" Reveal	\$779

Cut-Out Dimensions:
12 ⅞" W x 19 ¾" H x 20 ⅞" D



PROPANE TANK

56825	Flat	\$339
56830	½" Reveal	\$489

Cut-Out Dimensions:
14 ⅝" W x 19 ¾" H x 16 ½" D



SINGLE DRAWER

09970	Small, Flat	\$388
-------	-------------	-------

Cut-Out Dimensions:
Small - 23 ⅝" W x 4 ⅞" H x 20 ⅞" D



WARMING DRAWER

120V Electric Required

85747	½" Reveal	\$1,349
-------	-----------	---------

Cut-Out Dimensions:
28 ⅝" W x 10 ⅞" H x 20 ⅞" D

Note:
Dimensions listed are Cut-Out Dimensions

ISLAND ACCESSORIES



97623

30" BAR CENTER

Includes: Sink w/ faucet, cutting board, removable condiment tray, ice chest w/ removable lid, towel holder, and bottle opener

97623 30" Bar Center \$1,869

Cut-Out Dimensions:

Bar Center 29" W x 9 3/4" H x 22 3/4" D

SINK - DUAL MOUNT

Includes: Faucet

Drop-In or Under Counter Mount

12516 15" Sink \$489

12515 18" Sink \$539

12530 24" Sink \$559

12535 30" Sink \$599

Cut-Out Dimensions:

15" Top Mount: 14 1/16" W x 14 1/16" D

18" Top Mount: 17 23/32" W x 17 23/32" D

24" Top Mount: 23 1/4" W x 19 1/8" D

30" Top Mount: 29 3/16" W x 21 1/8" D

15" Under Mount: 13" W x 11 1/32" D

18" Under Mount: 16 1/32" W x 14 1/32" D

24" Under Mount: 21 5/8" W x 15 13/16" D

30" Under Mount: 27 1/16" W x 17" D



ISLAND VENT

Stainless Steel

44500 Island Vent \$29

Dimensions:

11 3/8" W x 3 3/4" H



44500

BOTTLE OPENER

Includes: Cap Catcher

66006 Bottle Opener \$139

Dimensions:

6" W x 10" H



66006

ICE CHEST

Includes: Condiment Tray

00002 Ice Chest \$819

Cut-Out Dimensions:

13 3/4" W x 20 1/2" H x 15 1/2" D



00002

ICE MAKER

Outdoor Rated 15"

13200 Ice Maker \$6,299

17940 Finish Frame Kit, 1/2" Reveal \$119
(Left & Right Sides Only)

Cut-Out Dimensions:

Ice Maker 15 1/2" W x 35" H x 24" D



13200

Specifications

- Outdoor Rated
- 62 lb. Production Capacity per day
- Gourmet Style Rounded Ice Cubes
- No-Frost Operation Reversible door
- Uses Standard 3/4" OD Water Line
- 100% CFC Free
- UL Approved for Outdoor Use
- ADA Approved
- Rated Power – 115v/60hz

REFRIGERATION



11520

REFRIGERATOR

Standard 4.5 cu. ft.

11520	Refrigerator	\$699
99940	Finish Frame Kit, ½" Reveal	\$159

Cut-Out Dimensions:

Refrigerator	20 ¾" W x 33 ¼" H x 20 ¾" D
Trim Kit	24 ¾" W x 34 ¼" H

Specifications

- Stainless Steel Exterior Door Panel
- 4.5 cu. ft. Capacity
- Space Saving Flush Back Design
- Reversible Door - Left or Right Swing
- Full Range Temperature Control
- Not Outdoor Rated



13700

REFRIGERATOR

Outdoor Rated 4.9 cu. ft.

13700	Refrigerator	\$2,359
13910	Finish Frame Kit, ½" Reveal	\$169

Cut-Out Dimensions:

Refrigerator	24 ¾" W x 33 ¼" H x 24 ¼" D
Trim Kit	24 ½" W x 34 ¼" H

Specifications

- Stainless Steel Refrigerator
- 4.9 cu. ft. Capacity
- Outdoor Rated
- Internal Digital LED Control Panel
- 3 Shelf Storage System
- Self-closing, Sealed Locked Door
- Reversible Door – Left or Right Swing
- ETL, DOE, and CE Certifications
- Front Venting Internal & External Fans



13100

REFRIGERATOR

Outdoor Rated 4.9 cu. ft., Glass Door

13100	Refrigerator	\$2,359
13910	Finish Frame Kit, ½" Reveal	\$169

Cut-Out Dimensions:

Refrigerator	24 ¾" W x 33 ¼" H x 24 ¼" D
Trim Kit	24 ½" W x 34 ¼" H

Specifications

- Outdoor Rated
- 4.9 cu. ft. Capacity
- Internal Digital LED Control Panel
- Reversible Door w/ Recessed Handle
- Sealed Locking Door
- 3 Shelf Storage System
- 2 Adjustable Shelves
- ETL, DOE, and CE Certifications
- Front Venting Internal & External Fans



17400

REFRIGERATOR

Outdoor Rated 5.0 cu. ft., Double Drawer

17400	Refrigerator	\$2,609
--------------	---------------------	----------------

Cut-Out Dimensions:

Refrigerator	24 ½" W x 33" H x 23 ⅞" D
--------------	---------------------------

Specifications

- 304 Stainless Steel 2 Drawer Refrigerator
- 5.0 cu. ft. Capacity
- Outdoor Rated
- Internal Digital LED Control Panel
- Self-closing, Sealed Drawers
- ETL, DOE, and CE Certifications
- Front Venting Internal & External Fans



17900

KEGERATOR

Single Tap Outdoor Rated (CO2 Tank Included)

17900	Kegerator	\$3,849
17950	Optional Double Tap	\$1,139
17940	Finish Frame Kit, ½" Reveal	\$119

(Left & Right Sides Only)

Cut-Out Dimensions:

Kegerator	24 ½" W x 35" H x 25 ¾" D
Tap	15" from the front panel w/ 1 ½" hole

Specifications

- Outdoor Rated & NSF Certified
- LED Interior Light
- Includes Single Tap
- 304 Stainless Steel Construction
- Reversible Self Closing Door
- Free Standing or Built In
- Temperature Range of 32° – 50°F
- ETL, CETL, DOE, NSF Rated
- Insulation Sleeve for Built-in

SUMMIT APPLIANCES

Outdoor Kitchen Island Components



Features: Stainless Steel Construction, Digital Thermostats, and LED lighting.



191812

FRIDGE

\$2,420

191812

5.0 cu. ft

Glass Front

SS Exterior | SS Interior

Dimensions: 34" H x 23 3/8" W x 23 1/2" D



191821

FREEZER

\$2,775

191821

4.6 cu. ft

Stainless Steel

Dimensions: 34" H x 23 3/8" W x 23 3/8" D



191814

KEGERATOR

\$2,920

191814

Single Dispensary

Stainless Steel

Freestanding or Built-in

Fits 1 Full or 1/4 Keg | Fits (2) 1/6 Kegs

Dimensions: 33 1/2" H x 24" W x 25 3/8" D



191815

KEGERATOR

\$2,805

191815

Twin Dispensary

Stainless Steel

Freestanding or Built-in

Fits (1) 1/4 Keg | Fits (2) 1/2 Kegs

Dimensions: 34 3/8" H x 23 3/8" W x 24 1/8" D

SUMMIT ADA APPLIANCES

ADA Compliant Components



Features: 32" height for use under lower ADA compliant counters, Weatherproof Stainless Steel Construction, Digital Thermostats, and LED lighting.



191831

FRIDGE

\$2,485

191831

5.5 cu. ft

SS Exterior

Dimensions: 32 1/4" H x 23 3/4" W x 25" D



191832

TWO-DRAWER FRIDGE

\$2,530

191832

4.8 cu. ft

SS Exterior

Unit can be raised to 34.25", with a taller kickplate included

Dimensions: 32" H x 23 3/4" W x 22 3/4" D



191851

ICE MAKER

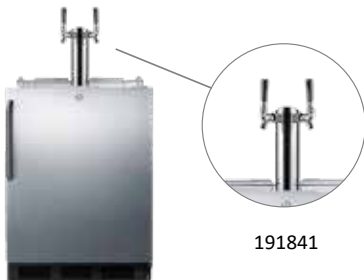
\$2,782

191851

SS Exterior

Produces 7/8" x 7/8" x 7/8" clear ice cubes, Can make up to 50 lbs. of clear ice cubes in a day cycle and store up to 25 lbs. per day.

Dimensions: 32 3/8" H x 14 1/2" W x 23 1/4" D



191841

KEGERATOR

\$3,471

191841

Twin Dispensary

SS Exterior

Includes a 5 lb. CO2 tank and regulator, dual tap draft arm, Sankey American tap, connection hardware, and cleaning kit

Twin draft tower allows you to serve from two 1/6 (sixtel) sized kegs

Dimensions: 32 1/4" H x 23 3/4" W x 24 3/4" D