



BULL GRILLS & COMPONENTS

GAS | CHARCOAL

REV: 07/18/24

TABLE OF CONTENTS

GAS GRILLS

- 24" Grill..... 2
- 30" Grill..... 4
- 38" Grill..... 6
- 46" Grill..... 8

CHARCOAL GRILL

- Bison 10

GAS GRIDDLE

- Stockman Griddle 11

BUILT-IN GRILL COMPONENTS

- Pizza Oven..... 12
- Vent Hood..... 14
- Side Burners..... 15
- Door Components 16
- Drawer Components..... 17
- Island Components..... 18
- Refrigeration 19

DURABULL

- Myrtle Beach 22
- Charleston..... 23
- Savannah 24
- Augusta 25

BARRY'S RESTORE IT ALL PRODUCTS

- Kits, Sprays & Specialty Items 26

LITERATURE

Item #	Description	Retail
24158	Product Guide	N/C
24177	Pizza Oven Dual Fuel	N/C
15555	Grill Head & ReliaBull Flyer	N/C
24156	Bull Quad Fold Brochure	N/C
24004	Mix & Match	N/C

24" GAS GRILLS



STEER
24" 3 - Burner



Steer Grill w/ Cart

GRILL FEATURES

- 304, 14 Gauge Stainless Steel Construction
- 45,000 BTU Main Cooking Surface
- 15,000 BTU's per Burner
- Single Piece Dual Lined Hood
- Solid Stainless Steel Cooking Grates
- ReliaBull SS Flame Tamers
- Full Size Drip Tray
- Heavy Duty Thermometer
- Push & Turn Piezo Igniter
- Zinc Control Knobs
- Warming Rack Included
- Available in NG or LP
- Available in Built-in and Cart Models

SPECIFICATIONS

FEATURE	24" STEER
Burner Style	SS Bar
Cooking Surface	556 sq.in.
Dash Board Lights	✘
Twin Interior Lights	✘
Infrared Back Burner	✘
Rotisserie Kit	✘
Infrared Searing Burner	Optional
Weather Cover	Optional
Warranty	Lifetime Grates & Firebox

CART FEATURES

- Stainless Steel Construction
- Cart Base comes standard with Double Doors
- Side Shelves feature towel racks and tool hooks
- 4 heavy duty swivel locking casters
- Optional Side Kick Cart Side Burner

24" GAS GRILLS



GRILL HEADS

Cut-Out Dimensions: 25 5/8" W x 9 1/2" H x 21" D

Item # - NG	Item # - LP	Description	Retail
69009	69008	24" Steer Grill Head, 3 Burner	\$1,349

CARTS *(Requires Grill Head)*

Item #	Description	Retail
69500	24" Steer Cart	\$619
60010	Side Kick Cart Side Burner - LP 12,000 BTU's (Compatible with all Gas Grill Carts)	\$638

WEATHER COVERS

Item #	Description	Retail
72016	24" Steer Weather Cover, Grill Head	\$68
69105	24" Steer Weather Cover, Cart and Grill	\$128

ACCESSORIES

Item #	Description	Retail
20505	Infrared Searing Burner, 20,000 BTU's (Fits all Bull Grills)	\$438
97020	Griddle Plate, Removable (Replaces 2 Grill Grates)	\$298
24267	Grease Tray Liner - 3 Pack Poly Bag	\$18
75000	Smoker Box, Large Easy Fill (Fits full length between Flame Tamers & Grates)	\$58
24402	Wind Guard, 24"	\$538
69429	Finishing Frame, 1/2" Reveal (Cut-Out Dimensions: 25 5/8" W x 9 1/2" H)	\$118



Side Kick Cart Side Burner



Grill Head Weather Cover



Griddle Plate



Grease Tray Liner



1/2" Reveal

30" GAS GRILLS



OUTLAW & LONESTAR
30" 4 - Burner



ANGUS
30" 4 - Burner



ANGUS ELITE
30" 4 - Burner

**Elite Grill Series
Available to
Elite Dealers
ONLY**



CART FEATURES

- Stainless Steel Construction
- Cart Base comes standard with Double Doors
- Side Shelves feature towel racks and tool hooks
- 4 heavy duty swivel locking casters
- Optional Side Kick Cart Side Burner

FEATURES

- 304, 14 Gauge Stainless Steel Construction
- 60,000 BTU Main Cooking Surface
- 15,000 BTU's per Burner
- Single Piece Dual Lined Hood
- Solid Stainless Steel Cooking Grates
- ReliaBull SS Flame Tamers
- Full Size Drip Tray
- Heavy Duty Thermometer
- Push & Turn Piezo Igniter
- Zinc Control Knobs
- Warming Rack Included
- Available in NG or LP
- Available in Built-in and Cart Models

SPECIFICATIONS

FEATURE	30" OUTLAW	30" LONESTAR	30" ANGUS	30" ANGUS ELITE
Burner Style	Porcelain Coated Cast Iron	SS Bar	Cast SS	Cast SS
Cooking Surface	810 sq. in.	810 sq. in.	810 sq.in.	810 sq.in.
Dash Board Lights	✗	✗	✗	Red
Twin Interior Lights	✗	✓	✓	✓
Infrared Back Burner	✗	✗	15,000 BTU's	15,000 BTU's
Rotisserie Kit	Optional	Optional	Included	Included
Infrared Searing Burner	Optional	Optional	Optional	Included
Weather Cover	Optional	Optional	Optional	Built-in Included
Warranty	Lifetime Grates & Firebox		Lifetime Grates, Firebox, & Burner	

30" GAS GRILLS



GRILL HEADS

Cut-Out Dimensions: 31" W x 9 1/2" H x 21" D

Item # - NG	Item # - LP	Description	Retail
26039	26038	30" Outlaw Grill Head, 4 Burner	\$1,469
87049	87048	30" Lonestar Grill Head, 4 Burner	\$1,779
47629	47628	30" Angus Grill, 4 Burner	\$2,389
42009	42008	30" Angus Elite Grill, 4 Burner	\$3,179

CARTS *(Requires Grill Head)*

Item #	Description	Retail
45551	30" Cart	\$979
60010	Side Kick Cart Side Burner - LP 12,000 BTU's (Compatible with all Gas Grill Carts)	\$638

WEATHER COVERS

Item #	Description	Retail
45005	30" Weather Cover, Grill Head (Included with Angus Elite)	\$78
72012	30" Weather Cover, Cart and Grill	\$158

INSULATED JACKETS *(Used when installing the grill into a combustible island structure) Double Lined*

Item #	Description	Cut-Out Dimensions	Retail
47017	30" Grill Insulated Jacket	37 7/8" W x 10" H x 22" D	\$538

ACCESSORIES

Item #	Description	Retail
20505	Infrared Searing Burner, 20,000 BTU's (Included with Angus Elite)	\$438
97020	Griddle Plate, Removable (Replaces 2 Grill Grates)	\$298
24268	Grill Grease Tray Liner - 12 pcs per box	\$55
46000	Rotisserie Kit (Includes SS Motor, Spit, Cage & Counter Balance) (Included with Angus & Angus Elite)	\$308
75000	Smoker Box, Large Easy Fill (Fits full length between Flame Tamers & Grates)	\$58
24403	Wind Guard, 30"	\$548
49328*	Finishing Frame, Flat (Cut-Out Dimensions: 31" W x 7 3/8" H)	\$158
49330	Finishing Frame, 1/2" Reveal (Cut-Out Dimensions: 31" W x 9 1/2" H)	\$118

*While Supplies Last



Side Kick Cart Side Burner



Grill Head Weather Cover



Griddle Plate



Grease Tray Liner



1/2" Reveal

38" GAS GRILLS



**Elite Grill Series
Available to
Elite Dealers
ONLY**



BRAHMA
38" 5 - Burner



BRAHMA ELITE
38" 5 - Burner



CART FEATURES

- Stainless Steel Construction
- Cart Base comes standard with Double Doors
- Side Shelves feature towel racks and tool hooks
- 4 heavy duty swivel locking casters
- Optional Side Kick Cart Side Burner

FEATURES

- 304, 14 Gauge Stainless Steel Construction
- 75,000 BTU Main Cooking Surface
- 15,000 BTU's per Burner
- Single Piece Dual Lined Hood
- Solid Stainless Steel Cooking Grates
- ReliaBull SS Flame Tamers
- Full Size Drip Tray
- Heavy Duty Thermometer
- Push & Turn Piezo Igniter
- Zinc Control Knobs
- Warming Rack Included
- Available in NG or LP
- Available in Built-in and Cart Models

SPECIFICATIONS

FEATURE	38" BRAHMA	38" BRAHMA ELITE
Burner Style	Cast SS	Cast SS
Cooking Surface	1,026 sq.in.	1,026 sq. in.
Dash Board Lights	✘	Red
Twin Interior Lights	✓	✓
Infrared Back Burner	15,000 BTU's	15,000 BTU's
Rotisserie Kit	Included	Included
Infrared Searing Burner	Optional	Included
Weather Cover	Optional	Built-in Included
Warranty	Lifetime Grates, Firebox, & Burner	

38" GAS GRILLS



GRILL HEADS

Cut-Out Dimensions: 38 1/2" W x 9 1/2" H x 21" D

Item # - NG	Item # - LP	Description	Retail
57569	57568	38" Brahma Grill, 5 Burner	\$3,169
52009	52008	38" Brahma Elite Grill, 5 Burner	\$4,129

CART (Requires Grill Head)

Item #	Description	Retail
55510	38" Cart	\$1,049
60010	Side Kick Cart Side Burner - LP 12,000 BTU's (Compatible with all Gas Grill Carts)	\$638

WEATHER COVERS

Item #	Description	Retail
56006	38" Weather Cover, Grill Head (Included with Brahma Elite)	\$98
55005B	38" Weather Cover, Cart and Grill	\$188

INSULATED JACKET (Used when installing the grill into a combustible island structure) Double Lined

Item #	Description	Cut-Out Dimensions	Retail
47018	38" Brahma Grill Insulated Jacket	45 3/8" W x 10" H x 22" D	\$698

ACCESSORIES

Item #	Description	Retail
20505	Infrared Searing Burner, 20,000 BTU's (Included with Brahma Elite)	\$438
97020	Griddle Plate, Removable (Replaces 2 Grill Grates)	\$298
24269	Grease Tray Liner (12 pcs per box)	\$65
75000	Smoker Box, Large Easy Fill (Fits full length between Flame Tamers & Grates)	\$58
24404	Wind Guard, 38"	\$578
58726*	Finishing Frame, Flat (Cut-Out Dimensions: 38 1/2" W x 7 3/4" H)	\$158
58730	Finishing Frame, 1/2" Reveal (Cut-Out Dimensions: 38 1/2" W x 9 1/2" H)	\$158

*While Supplies Last



Side Kick Cart Side Burner



Grill Head Weather Cover



Griddle Plate



Grease Tray Liner



1/2" Reveal

46" GAS GRILL



DIABLO GRILL HEAD
46" 6 - Burner



Diablo Grill w/ Cart

CART FEATURES

- Stainless Steel Construction
- Cart Base comes standard with (2) Drawers and (2) Single Doors
- Side Shelves feature towel racks and tool hooks
- 4 heavy duty swivel locking casters
- Optional Side Kick Cart Side Burner

FEATURES

- 304, 14 Gauge Stainless Steel Construction
- 90,000 BTU Main Cooking Surface
- 15,000 BTU's per Burner
- Single Piece Dual Lined Hood
- Solid Stainless Steel Cooking Grates
- ReliaBull SS Flame Tamers
- Full Size Drip Tray
- Heavy Duty Thermometer
- Push & Turn Piezo Igniter
- Zinc Control Knobs
- Warming Rack Included
- Available in NG or LP
- Available in Built-in and Cart Models

SPECIFICATIONS

FEATURE	46" DIABLO
Burner Style	Cast SS
Cooking Surface	1,242 sq. in.
Dash Board Lights	✘
Twin Interior Lights	✓
Infrared Back Burner	15,000 BTU's
Rotisserie Kit	Included
Infrared Searing Burner	Optional
Weather Cover	Optional
Warranty	Lifetime Grates, Firebox, & Burner

46" GAS GRILL



GRILL HEADS

Cut-Out Dimensions: 46" W x 9 1/2" H x 21" D

Item # - NG	Item # - LP	Description	Retail
62649	62648	46" Diablo Grill, 6 Burner	\$3,959

CART (Requires Grill Head)

Item #	Description	Retail
28038	46" Diablo Cart w/ Adapter	\$1,596
60010	Side Kick Cart Side Burner - LP 12,000 BTU's (Compatible with all Gas Grill Carts)	\$638

WEATHER COVERS

Item #	Description	Retail
72017	46" Diablo Weather Cover, Grill Head	\$98
72014	46" Diablo Weather Cover, Cart and Grill	\$178

ACCESSORIES

Item #	Description	Retail
20505	Infrared Searing Burner, 20,000 BTU's	\$438
97020	Griddle Plate, Removable (Replaces 2 Grill Grates)	\$298
75000	Smoker Box, Large Easy Fill (Fits full length between Flame Tamers & Grates)	\$58
24405	Wind Guard, 46"	\$598
72009	Finishing Frame, 1/2" Reveal (Cut-Out Dimensions: 46" W x 9 1/2" H)	\$188



Side Kick Cart Side Burner



Grill Head Weather Cover



Griddle Plate



1/2" Reveal

BISON CHARCOAL GRILL



The Bison Charcoal Grill cart has been re-engineered for greater performance. The vent system and gasket features allows for greater temperature control with the ability to regulate the oxygen flow into the firebox. Now you can set up the Bull Bison for slow and low BBQ, or crank it up to get that steak house quality sear on your steaks and chops.



GRILL HEAD

Cut-Out Dimensions: 29 1/2" W x 13 1/4" H x 18 1/2" D

Item #	Description	Retail
88787	30" Bison Charcoal Grill Head	\$1,629

ACCESSORIES

Item #	Description	Retail
88900	30" Bison Cart	\$519
72018	30" Bison Weather Cover, Grill Head	\$78
88720	Finish Frame, 1/2" Reveal (Cut-Out Dimensions: 29 1/2" W x 13 1/4" H)	\$118



FEATURES

- 304, 14 Gauge Stainless Steel Construction
- Single Piece Dual Lined Hood
- Heavy Duty Stainless Steel Grates
- Adjustable Charcoal Bed
- High Temp Oven Gasket
- Heavy Duty Thermometer
- Warming Rack 210 sq. in.
- Cooking Surface 810 sq. in.



STOCKMAN GAS GRIDDLE



Like all of Bull's products, the Bull Commercial Style Griddles are constructed of 304 stainless steel and uses multiple burners to produce powerful BTU's under a chromium plated griddle designed to withstand its intended outdoor application. The griddle will fit in most outdoor kitchens and is available in both LP and NG versions.



30" GRIDDLE



GRIDDLE

Cut-Out Dimensions: 31" W x 9 1/2" H x 21" D

Item # - NG	Item # - LP	Description	Retail
92009	92008	30" Stockman Griddle Head	\$2,299

INSULATED JACKET

(Used when installing the grill into a combustible island structure) Double Lined

Item #	Description	Cut-Out Dimensions	Retail
47017	30" Insulated Jacket	37 7/8" W x 10" H x 22" D	\$538

ACCESSORIES

Item #	Description	Retail
45551	30" Cart, Griddle	\$979
45005	30" Weather Cover, Griddle Head	\$78
72012	30" Weather Cover, Cart and Griddle	\$158
24268	Grease Tray Liner (12 pcs per box)	\$55
24403	Wind Guard	\$548
49328*	Finishing Frame, Flat (Cut-Out Dimensions: 31" W x 7 5/8" H)	\$158
49330	Finishing Frame, 1/2" Reveal (Cut-Out Dimensions: 31" W x 9 1/2" H)	\$118

*While Supplies Last

GRIDDLE FEATURES

- 304, 14 Gauge Stainless Steel Construction
- 556 sq. in. Cooking Surface
- 60,000 BTU Main Cooking Surface
- Single Piece Dual Lined Hood
- Cast Iron Chromium Plated Griddle
- Full Size Drip Tray
- Push & Turn Piezo Igniter
- Zinc Control Knobs
- Available in NG or LP
- Lifetime Warranty on Griddle Top & Firebox

CART FEATURES

- Stainless Steel Construction
- Cart Base comes standard with Double Doors
- Side Shelves feature towel racks tool hooks
- 4 heavy duty swivel locking casters



COUNTERTOP PIZZA OVEN

Dual Fuel



PIZZA OVEN

Dimensions: 29" W x 30" H x 21" D

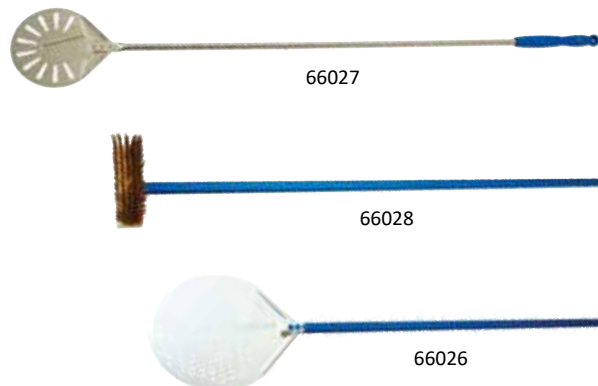
Item # - NG	Item # - LP	Description	Retail
69564	69550	Countertop Pizza Oven - Dual Fuel Includes: Cover, Pizza Peel/Launcher	\$1,499

ACCESSORIES

Item #	Description	Retail
66027	Pizza Tools - Professional Turning Peel (Handle Length 46")	\$188
66028	Pizza Tools - Professional Brass Bristle Brush (Handle Length 46")	\$208
66026	Pizza Tools - Professional Perforated Peel (Handle Length 46")	\$288
69569	Peel, Small (Stainless Steel)	\$188
69570	Brush, Short Handle	\$188

FEATURES

- Dual Fuel LP, NG, or Wood
- Removable Bluetooth Digital Thermometer
- Includes Cover and Pizza Peel/Launcher
- Two Food Temperature Probes
- Convenient Ash Clean Out Basket
- Can Reach Temperatures Up to 900°F
- Versatile Temp Control for Baking and Roasting
- Heats Up in Approximately 15 Minutes
- Quick Disconnect Gas Line



Note: Oven is designed to use with Gas or Wood separately, not together. Using the gas function in conjunction with wood will void any warranties.

PIZZA OVEN

Gas



The Bull Gas Fired Pizza oven offers the same great features of wood-fired ovens but with the added convenience of cooking with gas. These units don't require the ash cleanup that is associated with their wood-fired counterparts.

PIZZA OVEN

Dimensions: 38 1/2" W x 50" H x 33 3/4" D

Item #	Description	Retail
77650	Pizza Oven, LP Gas	\$5,898

ACCESSORIES

Item #	Description	Retail
77651	Cart, Pizza Oven	\$1,168
77653	NG Conversion Kit, Pizza Oven	\$200
66027	Pizza Tools - Professional Turning Peel (Handle Length 46")	\$188
66028	Pizza Tools - Professional Brass Bristle Brush (Handle Length 46")	\$208
66026	Pizza Tools - Professional Perforated Peel (Handle Length 46")	\$288
69569	Peel, Small (Stainless Steel)	\$188
69570	Brush, Short Handle	\$188

FEATURES

- Proudly made in Italy with European parts for authentic quality
- Fully operational in approximately fifteen minutes of preheating
- Our unique cooking chamber, domed front-to-back and side-to-side, eliminates hot spots and ensures uniform heat distribution.
- Cart features Slide-out handles and caster wheels that allow mobility and precise placement
- Painted exterior surfaces are electro-galvanized before powder coating, providing superb protection against corrosion.
- Maximum temperature rating of 900°F / 482.2°C; the highest on the market. Food Grade Cooking Stones
- 36,000 BTUs



VENT HOOD



VENT HOOD

The vent hood has 304 Grade 16 Gauge stainless steel construction, two powerful internal fan systems, and lights.

VENT HOODS

Item #	Description	Retail
66009	36" Vent Hood, Wall Mounted	\$4,598
66098	42" Vent Hood, Wall Mounted	\$4,708

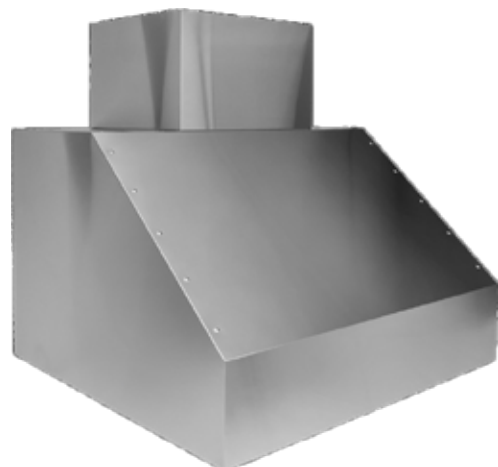
VENT DUCT COVERS

Item #	Description	Retail
66110	18" Vent Duct Cover, for Ceilings 9' - 10' (18"W x 15"D)	\$918
66111B	42" Vent Duct Cover, for Ceilings 9' - 10' (42"W x 15"D) (42" Vent Hood Only)	\$989
66112	18" Vent Duct Cover, for Ceilings 10' - 12' (18"W x 15"D)	\$1,029
66113	42" Vent Duct Cover, for Ceilings 10' - 12' (42"W x 15"D) (42" Vent Hood Only)	\$1,194
66052*	Full Vent Duct Cover (36"W x 15"D x 28"H)	\$738

*Special Order

FEATURES

- 304 Grade, 16 Gauge Stainless Steel Construction
- Dishwasher Safe, Commercial Grade Stainless Steel Baffle Filters
- Two Internal Exhaust Fans that Generate 1250 CFM
- Dimmable Twin 50-watt Halogen Lights
- Generously proportioned 32" hood depth provides an exceptional capture area
- 10" Round Top Discharge
- Matching Duct Covers are available for Vent Hoods



Vent Hood with Duct Cover

ELECTRICAL REQUIREMENTS

- 120 Volt Hardwire
- 20 Amp Electrical Supply

SIDE BURNERS



60008/60009

SINGLE SIDE BURNER

\$469

Cut-Out Dimensions: 11 ¼" W x 3 ¼" H x 17 ½" D

- 60008 Burner, LP** (Connects to grill)
- 60009 Burner, NG** (Independent)

Specifications:

15,000 BTU's | Drop-in Installation | SS Burner with SS Burner Cover



60018/60019

SINGLE SIDE BURNER, PRO

\$799

Cut-Out Dimensions: 12 ¾" W x 9 ½" H x 12" D

- 60018 Burner, LP** (Connects to grill)
- 60019 Burner, NG** (Independent)

- 93007*** **Finishing Frame, Flat** **\$108**
- 93008** **Finishing Frame, ½" Reveal** **\$88**

Cut-Out Dimensions: 12 ½" W x 7 ¾" H

Cut-Out Dimensions: 12" W x 9 ½" H

Specifications:

25,000 BTU's | Slide-in Installation | Brass Burner with SS Burner Cover



30008/30009

DOUBLE SIDE BURNER

\$779

Cut-Out Dimensions: 12 ¾" W x 9 ½" H x 20 ¾" D

- 30008 Burner, LP** (Connects to grill)
- 30009 Burner, NG** (Independent)

- 93007*** **Finishing Frame, Flat** **\$108**
- 93008** **Finishing Frame, ½" Reveal** **\$88**

Cut-Out Dimensions: 12 ½" W x 7 ¾" H

Cut-Out Dimensions: 12" W x 9 ½" H

Specifications:

22,000 BTU's | Slide-in Installation | Brass Burner with SS Burner Cover



440009

DOUBLE SIDE BURNER, ELITE

\$939

Cut-Out Dimensions: 12 ¾" W x 9 ½" H x 20 ¾" D

Includes: Knob Lights

- 40009 Burner, NG** (Independent)

- 93007*** **Finishing Frame, Flat** **\$108**
- 93008** **Finishing Frame, ½" Reveal** **\$88**

Cut-Out Dimensions: 12 ½" W x 7 ¾" H

Cut-Out Dimensions: 12" W x 9 ½" H

Specifications:

22,000 BTU's | Slide-in Installation | Brass Burner with SS Burner Cover



96000/96001

POWER BURNER

\$1,489

Cut-Out Dimensions: 21" W x 9 ½" H x 21" D

- 96000 Burner, LP** (Connects to 20 lb tank)
- 96001 Burner, NG** (Independent)

- 96150*** **Finishing Frame, Flat** **\$128**
- 96151** **Finishing Frame, ½" Reveal** **\$118**

Cut-Out Dimensions: 21 ½" W x 7 ¾" H

Cut-Out Dimensions: 21" W x 9 ½" H

Specifications:

61,000 BTU's | Slide-in Installation | Brass/SS Burner with SS Burner Cover

*While Supplies Last

DOOR COMPONENTS



DOUBLE DOORS

30" & 38" Includes: Paper Towel Holder

33590	25", 1/2" Reveal	\$469
33568*	30", Flat	\$519
33580	30", 1/2" Reveal	\$509
34000*	38", Flat	\$629
34020	38", 1/2" Reveal	\$609

Cut-Out Dimensions:
 25" - 25 1/2" W x 19 3/4" H
 30" - 31" W x 19 3/4" H
 38" - 38 1/2" W x 19 3/4" H



DOUBLE DOORS, VENTED

44570*	30", Flat	\$638
45580	30", 1/2" Reveal	\$529

Cut-Out Dimensions:
 30" - 31" W x 19 3/4" H



Reversible

DOOR/2 DRAWER COMBO

Includes: Paper Towel Holder

25890	30", 1/2" Reveal	\$849
55875*	38", Flat	\$999
55890	38", 1/2" Reveal	\$979

Cut-Out Dimensions:
 30" - 31" W x 19 3/4" H x 20 3/4" D
 38" - 38 5/8" W x 19 3/4" H x 20 3/4" D



Reversible

DOOR/3 DRAWER COMBO

Included Paper Towel Holder

25900	30", 1/2" Reveal	\$979
25920	38", 1/2" Reveal	\$1,099

Cut-Out Dimensions:
 30" - 31" W x 19 5/8" H x 20 1/2" D
 38" - 38 5/8" W x 19 5/8" H x 20 1/2" D

*While Supplies Last

Note:
 Dimensions listed are Cut-Out Dimensions



HORIZONTAL DOOR

89990	1/2" Reveal	\$348
--------------	--------------------	--------------

Cut-Out Dimensions:
 23 1/8" W x 15 3/4" H



VERTICAL DOOR

Includes: Paper Towel Holder

89995	Right, 1/2" Reveal	\$399
98560	Left, 1/2" Reveal	\$399

Cut-Out Dimensions:
 15 7/8" W x 19 3/4" H



VERTICAL DOOR, VENTED

Right Swing

90000	1/2" Reveal	\$329
--------------	--------------------	--------------

Cut-Out Dimensions:
 23" W x 15 3/4" H



VERTICAL DOOR, XL

Includes: Paper Towel Holder

Right Swing

89985*	Flat	\$708
89998	1/2" Reveal	\$718

Cut-Out Dimensions:
 21" W x 32 1/2" H



DOOR/PROPANE DRAWER

Pull out 20 lb Propane Tank Access.
 Includes Paper Towel Holder

65784*	Flat	\$859
65790	1/2" Reveal	\$849

Cut-Out Dimensions:
 31 1/8" W x 19 3/4" H x 16 5/8" D

DRAWER COMPONENTS



SINGLE TRASH, SLIM

Includes 10 Gallon Trash Bin

56941*	Flat	\$659
56960	½" Reveal	\$649

Cut-Out Dimensions:
14 5/16" W x 24 5/8" H x 19 9/16" D



TRIPLE DRAWER (21" W)

58110*	Flat	\$958
58120	½" Reveal	\$939

Cut-Out Dimensions:
18 ½" W x 24 ¾" H x 16 ¼" D



DOUBLE TRASH

Includes (2) 8 Gallon Trash Bins

56950	½" Reveal	\$949
--------------	------------------	--------------

Cut-Out Dimensions:
18 ½" W x 24 ¾" H x 23 ¼" D



DOUBLE DRAWER (15" W)

56985*	Flat	\$659
56990	½" Reveal	\$649

Cut-Out Dimensions:
12 7/8" W x 19 ¾" H x 20 15/16" D



PROPANE TANK

56825*	Flat	\$339
56830	½" Reveal	\$399

Cut-Out Dimensions:
14 5/8" W x 19 ¾" H x 16 ½" D



SINGLE DRAWER

09970*	Small, Flat	\$388
19970	Small, ½" Reveal	\$329

19980	Large, ½" Reveal	\$519
--------------	-------------------------	--------------

Cut-Out Dimensions:
Small - 23 5/8" W x 4 1/8" H x 20 15/16" D
Large - 25 ¼" W x 10 ¾" H x 24" D

*While Supplies Last



WARMING DRAWER

120V Electric Required

85747	½" Reveal	\$1,129
--------------	------------------	----------------

Cut-Out Dimensions:
28 5/8" W x 10 1/8" H x 20 15/16" D

Note:

Dimensions listed are Cut-Out Dimensions



97623

30" BAR CENTER

Includes: Sink w/ faucet, cutting board, removable condiment tray, ice chest w/ removable lid, towel holder, and bottle opener

97623 30" Bar Center \$1,569

Cut-Out Dimensions:

Bar Center 29" W x 22 3/4" H x 9 3/4" D



12516/12515

SINK - DUAL MOUNT

*Includes: Faucet
Drop-In or Under Counter Mount*

12516 15" Sink \$399
12515 18" Sink \$449

Cut-Out Dimensions:

15" Top Mount: 14 7/16" W x 14 7/16" H
18" Top Mount: 17 23/32" W x 17 23/32" H
15" Under Mount: 13" W x 11 1/32" H
18" Under Mount: 16 1/32" W x 14 1/32" H

ISLAND VENT

Stainless Steel

44500 Island Vent \$28

*Dimensions:
11 7/8" W x 3 3/4" H*



44500



00002

ICE CHEST

Includes: Condiment Tray

00002 Ice Chest \$788

*Cut-Out Dimensions:
13 3/4" W x 20 1/2" H x 15 1/2" D*

**While Supplies Last*

BOTTLE OPENER

Includes: Cap Catcher

66006 Bottle Opener \$118

*Dimensions:
6" W x 10" H*



66006

REFRIGERATION



11520

REFRIGERATOR

Standard 4.5 cu. ft.

11520	Refrigerator	\$599
99935*	Finish Frame Kit, Flat	\$168
99940	Finish Frame Kit, ½" Reveal	\$148

Cut-Out Dimensions:

Refrigerator	20 ¾" W x 33 ¼" H x 20 ¾" D
Trim Kit	24 ¾" W x 34 ¼" H

Specifications

- Stainless Steel Exterior Door Panel
- 4.5 cu. ft. Capacity
- Space Saving Flush Back Design
- Reversible Door - Left or Right Swing
- Full Range Temperature Control
- Not Outdoor Rated



13700

REFRIGERATOR

Outdoor Rated 4.9 cu. ft.

13700	Refrigerator	\$1,969
13900*	Finish Frame Kit, Flat	\$168
13910	Finish Frame Kit, ½" Reveal	\$158

Cut-Out Dimensions:

Refrigerator	24 ¾" W x 33 ¼" H x 24 ¼" D
Trim Kit	24 ½" W x 34 ¼" H

Specifications

- Stainless Steel Refrigerator
- 4.9 cu. ft. Capacity
- Outdoor Rated
- Internal Digital LED Control Panel
- 3 Shelf Storage System
- Self-closing, Sealed Locked Door
- Reversible Door – Left or Right Swing
- ETL, DOE, and CE Certifications
- Front Venting Internal & External Fans



17400

REFRIGERATOR

Outdoor Rated 5.0 cu. ft., Double Drawer

17400	Refrigerator	\$2,529
--------------	---------------------	----------------

Cut-Out Dimensions:

Refrigerator	24 ½" W x 33" H x 23 ⅞" D
--------------	---------------------------

Specifications

- 304 Stainless Steel 2 Drawer Refrigerator
- 5.0 cu. ft. Capacity
- Outdoor Rated
- Internal Digital LED Control Panel
- Self-closing, Sealed Drawers
- ETL, DOE, and CE Certifications
- Front Venting Internal & External Fans



17900

KEGERATOR

Single Tap Outdoor Rated (CO2 Tank Included)

17900	Kegerator	\$3,279
17950	Optional Double Tap	\$1,108
17940	Finish Frame Kit, ½" Reveal (Left & Right Sides Only)	\$108

Cut-Out Dimensions:

Kegerator	24 ½" W x 35" H x 25 ¾" D
Tap	15" from the front panel w/ 1 ½" hole

Specifications

- Outdoor Rated & NSF Certified
- LED Interior Light
- Includes Single Tap
- 304 Stainless Steel Construction
- Reversible Self Closing Door
- Free Standing or Built In
- Temperature Range of 32° – 50°F
- ETL, CETL, DOE, NSF Rated
- Insulation Sleeve for Built-in



13200

ICE MAKER

Outdoor Rated 15"

13200	Ice Maker	\$4,758
17940	Finish Frame Kit, ½" Reveal (Left & Right Sides Only)	\$108

Cut-Out Dimensions:

Ice Maker	15 ½" W x 35" H x 24" D
-----------	-------------------------

Specifications

- Outdoor Rated
- 62 lb. Production Capacity per day
- Gourmet Style Rounded Ice Cubes
- No-Frost Operation Reversible door
- Uses Standard ¼" OD Water Line
- 100% CFC Free
- UL Approved for Outdoor Use
- ADA Approved
- Rated Power – 115v/60hz

SUMMIT APPLIANCES

Outdoor Kitchen Island Components

Features: Stainless Steel Construction, Digital Thermostats, and LED lighting.



191812

FRIDGE

\$2,350

191812

5.0 cu. ft

Glass Front

SS Exterior | SS Interior

Dimensions: 34" H x 23 3/8" W x 23 1/2" D



191821

FREEZER

\$2,775

191821

4.6 cu. ft

Stainless Steel

Dimensions: 34" H x 23 3/8" W x 23 3/8" D



191813

WINE/BEVERAGE CENTER

\$2,220

191813

SS Exterior | Black Interior

6 Wire Shelves & 3 Glass Shelves

Dimensions: 34 1/2" H x 23 7/8" W x 23 7/8" D



191814

KEGERATOR

\$2,920

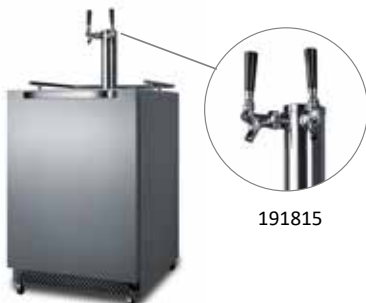
191814

Single Dispensary

Stainless Steel

Fits 1 Full or 1/4 Keg | Kits (2) 1/6 Kegs

Dimensions: 33 1/2" H x 24" W x 25 7/8" D



191815

KEGERATOR

\$2,805

191815

Twin Dispensary

Stainless Steel

Fits (1) 1/4 Keg | Kits (2) 1/6 Kegs

Dimensions: 34 3/8" H x 23 3/8" W x 24 1/8" D



Scan QR Code for Introduction Video on DuraBull Kitchen Islands.

DuraKitchens™ pairs quality USA craftsmanship with cutting edge innovation. Constructed of HDPE (High-density polyethylene), this new Outdoor Kitchen collection offers elegance with casual sophistication. Careful detailing has gone into the design and execution of each piece, from the well crafted door embossing and edging to the innovative patented, hidden joinery technology for solid joints. The innovative materials, advanced manufacturing, and thoughtful design allow DuraBull™ to synthesize classic styling with a modern curve. Yes, the future of Outdoor Kitchens has arrived!



DURABLE CONSTRUCTION

The 3/4" marine-grade HDPE is UV and weather-resistant. Cabinets will never rot, delaminate, or splinter and never need refinishing.



LIMITED LIFETIME WARRANTY

Assures the cabinetry you are buying is of good quality and without manufacturing defects, for years of worry-free enjoyment.



INNOVATIVE TECHNOLOGY

Uniquely constructed with a hidden patented joinery technology for a beautiful finish with no visible fasteners.



EASY TO CLEAN

Easy-to-clean surfaces means you spend more time enjoying your Outdoor Kitchen and less time cleaning them.



100% RECYCLABLE

HDPE cabinets have a recycling code of 2, which means at the end of its lifetime, it is easily recycled into usable products for home and garden.



DESIGNED IN THE USA

Discover the excellence of American ingenuity with our proprietary, and unique products. DuraBull™ cabinetry is manufactured and hand-assembled with materials sourced from American companies.

Double Trash/Recycling Drawer
Poly-Glide System



Safely Constructed
CSA Approved Fully Vented Grill Cabinets



Interior & Exterior
Perfect Color Match System



8' MYRTLE BEACH

DuraBull Kitchen Island



DuraBULL™

8' Myrtle Beach

Kitchens include: Angus 4-Burner Stainless Steel Grill and Deluxe Stainless Steel Refrigerator

\$12,399 Retail

Item #	Island Base	Counter Top	Fuel Type
53724	8' Charcoal Grey Base	Midnight Black Granite	LP
53725	8' Charcoal Grey Base	Midnight Black Granite	NG
53700	8' Dune Base	Coffee Brown Granite	LP
53701	8' Dune Base	Coffee Brown Granite	NG
53712	8' Symphony Blue Base	Galaxy White Granite	LP
53713	8' Symphony Blue Base	Galaxy White Granite	NG

FEATURES

- Angus 4-Burner Stainless Steel Grill
- Granite Countertop
- HDPE Marine Grade 3/4" Base
- Deluxe SS Refrigerator 5.0 cu ft
- Double Trash Drawer
- CSA Certified Venting



Scan QR Code to view Myrtle Beach Spec Sheet



Myrtle Beach
Dune Base

Granite Colors



Galaxy White

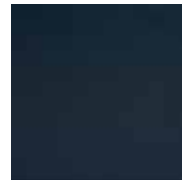


Coffee Brown

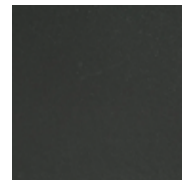


Midnight Black

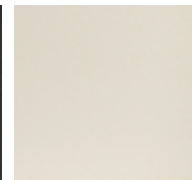
Base Colors



Symphony Blue



Charcoal Grey



Dune

10' CHARLESTON

DuraBull Kitchen Island



DuraBULL™

10' Charleston

Kitchens include: Angus 4-Burner Stainless Steel Grill and Deluxe Stainless Steel Refrigerator

\$14,699 Retail

Item #	Island Base	Counter Top	Fuel Type
53726	10' Charcoal Grey Base	Midnight Black Granite	LP
53727	10' Charcoal Grey Base	Midnight Black Granite	NG
53702	10' Dune Base	Coffee Brown Granite	LP
53703	10' Dune Base	Coffee Brown Granite	NG
53714	10' Symphony Blue Base	Galaxy White Granite	LP
53715	10' Symphony Blue Base	Galaxy White Granite	NG

FEATURES

- Angus 4-Burner Stainless Steel Grill
- Granite Countertop
- HDPE Marine Grade 3/4" Base
- Deluxe SS Refrigerator 5.0 cu ft
- Triple Drawer Storage
- CSA Certified Venting



Scan QR Code to view Charleston Spec Sheet



Charleston
Symphony Blue Base

Granite Colors



Galaxy White

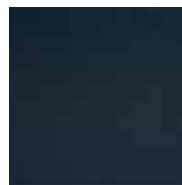


Coffee Brown

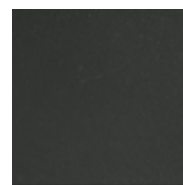


Midnight Black

Base Colors



Symphony Blue



Charcoal Grey



Dune

8' SAVANNAH

DuraBull Kitchen Island



DuraBULL™

Savannah (8' with 7' Return)

Kitchens include: Angus 4-Burner Stainless Steel Grill and Deluxe Stainless Steel Refrigerator

\$20,599 Retail

Left Return

Item #	Island Base	Counter Top	Fuel Type
53730	8'x7' Charcoal Grey Base	Midnight Black Granite	LP
53731	8'x7' Charcoal Grey Base	Midnight Black Granite	NG
53706	8'x7' Dune Base	Coffee Brown Granite	LP
53707	8'x7' Dune Base	Coffee Brown Granite	NG
53718	8'x7' Symphony Blue Base	Galaxy White Granite	LP
53719	8'x7' Symphony Blue Base	Galaxy White Granite	NG

FEATURES

- Angus 4-Burner Stainless Steel Grill
- Granite Countertop
- HDPE Marine Grade 3/4" Base
- Deluxe SS Refrigerator 5.0 cu ft
- Double Trash Drawer
- Left or Right Return Option
- CSA Certified Venting

Right Return

Item #	Island Base	Counter Top	Fuel Type
53728	8'x7' Charcoal Grey Base	Midnight Black Granite	LP
53729	8'x7' Charcoal Grey Base	Midnight Black Granite	NG
53704	8'x7' Dune Base	Coffee Brown Granite	LP
53705	8'x7' Dune Base	Coffee Brown Granite	NG
53716	8'x7' Symphony Blue Base	Galaxy White Granite	LP
53717	8'x7' Symphony Blue Base	Galaxy White Granite	NG



Scan QR Code to view Savannah Right Return Spec Sheet



Scan QR Code to view Savannah Left Return Spec Sheet



Savannah with 7' Left Return
Charcoal Base

Granite Colors



Galaxy White

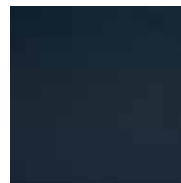


Coffee Brown

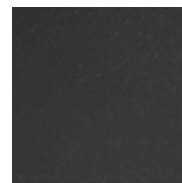


Midnight Black

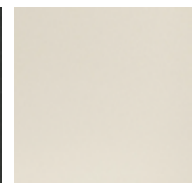
Base Colors



Symphony Blue



Charcoal Grey



Dune

10' AUGUSTA

DuraBull Kitchen Island



DuraBULL™

Augusta (10' with 7' Return)

Kitchens include: Angus 4-Burner Stainless Steel Grill and Deluxe Stainless Steel Refrigerator

\$22,999 Retail

Left Return

Item #	Island Base	Counter Top	Fuel Type
53734	10'x7' Charcoal Grey Base	Midnight Black Granite	LP
53735	10'x7' Charcoal Grey Base	Midnight Black Granite	NG
53710	10'x7' Dune Base	Coffee Brown Granite	LP
53711	10'x7' Dune Base	Coffee Brown Granite	NG
53722	10'x7' Symphony Blue Base	Galaxy White Granite	LP
53723	10'x7' Symphony Blue Base	Galaxy White Granite	NG

FEATURES

- Angus 4-Burner Stainless Steel Grill
- Granite Countertop
- HDPE Marine Grade 3/4" Base
- Deluxe SS Refrigerator 5.0 cu ft
- Triple Drawer Storage
- Left or Right Return Option
- CSA Certified Venting

Right Return

Item #	Island Base	Counter Top	Fuel Type
53732	10'x7' Charcoal Grey Base	Midnight Black Granite	LP
53733	10'x7' Charcoal Grey Base	Midnight Black Granite	NG
53708	10'x7' Dune Base	Coffee Brown Granite	LP
53709	10'x7' Dune Base	Coffee Brown Granite	NG
53720	10'x7' Symphony Blue Base	Galaxy White Granite	LP
53721	10'x7' Symphony Blue Base	Galaxy White Granite	NG



Scan QR Code to view Augusta Right Return Spec Sheet



Scan QR Code to view Augusta Left Return Spec Sheet



Augusta with 7' Right Return
Symphony Blue Base

Granite Colors



Galaxy White

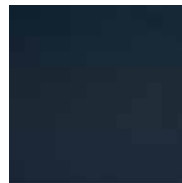


Coffee Brown

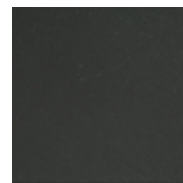


Midnight Black

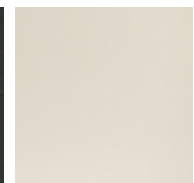
Base Colors



Symphony Blue



Charcoal Grey



Dune

BARRY'S RESTORE IT ALL PRODUCTS

Kits, Sprays & Specialty Items



Scratch-B-Gone
Homeowner Kit
1001



Scratch-B-Gone
Small Area Touch-Up Kit
1002



BBQ Grill Rescue Kit
1005



Collar Rescue Kit
1006



Stainless Steel Rescue Kit
1024



All Surface Rescue Spray
1011



Granite and Stone Rescue Spray
1010



Stainless Steel Rescue Spray
1009



Grill and Grate Degreaser
1013



Fire Door Glass Rescue
1020

RESTORE IT ALL PRODUCTS

Item #	Description	Retail Price per each
1001	Scratch-B-Gone Homeowner Kit	\$52.95
1002	Scratch-B-Gone Small Area Touch-Up Kit	\$25.95
1005	BBQ Exterior/Interior Restoration Kit	\$58.95
1006	Collar Rescue Kit	\$19.95
1024	Stainless Rust Medic Kit with Nano Technology	\$229.95
1011	All Surface Rescue Spray (16 oz)	\$12.95
1010*	Granite and Stone Rescue Spray (16 oz)	\$12.95
1009	Stainless Steel Rescue Spray (16 oz)	\$12.95
1013	Grill and Grate Degreaser (16 oz)	\$17.95
1020	Fire Door Glass Rescue (6 oz)	\$14.95

*Special Order